

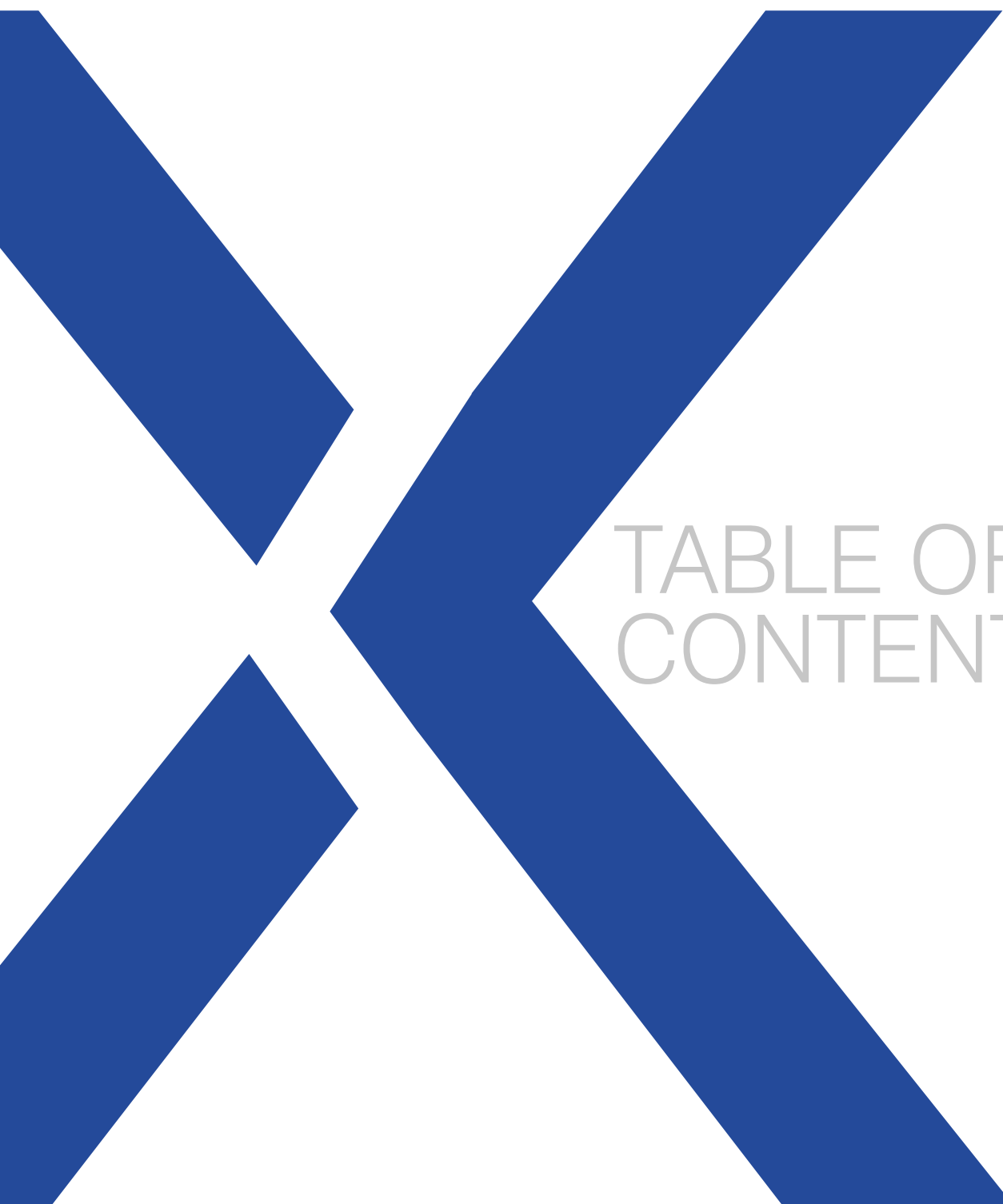


# PRODUCT CATALOGUE

*Surgical & Prosthesis Guide*

**naxis**<sup>®</sup>  
implants

[www.naxisimplant.com](http://www.naxisimplant.com)



# TABLE OF CONTENTS

# INDEX

# NX30

7

NX30  
IMPLANT



36

PLASTIC  
BURNOUT  
& TI-BASE  
PB ABUTMENT



12

FREEFORM  
ABUTMENT



40

LOCKAB



17

ANTIROTATIONAL  
SHOULDER  
ABUTMENT



46

TRANSFERS



20

ANGULAR  
SHOULDER  
ABUTMENT  
15° & 25°



47

IMPLANT  
ANALOG



24

TITANIUM  
PLATFORM  
FOR CAD/CAM



48

HEALING CAPS



28

STRAIGHT  
MULTI-UNIT



52

SURGICAL KIT



32

ANGULAR  
MULTI-UNIT  
17° & 30°



55

INSTRUMENTS



## NAXIS IMPLANT COMPANY

We are very proud to introduce German precision and excellence in our dental implants. Naxis is one of the well experienced implant, restorative and regenerative dentistry more than 8 years. in collaboration with clinics, institutes and universities, Naxis field experience, develops and manufactures dental implants, instruments, for use in tooth replacement and restoration. Recent technological advancements are providing a revolution in dentistry. The intelligent, well thought aut implant systems are being used successfully around the world. Naxis provides a wide range of products and solutions for both surgeons and comfort of the patients. We manufacture with passion for quality and desire to achieve the best patient outcomes. Surgeon and field experience-based feedback are our innovative engines. precision technology of manufacturing and multilevel processing of implants surface their reliable osseointegration has been achieved. We are very serious and have strict rules on our distributors and agents, aiming to give the best service to the dentists. In this frame our highly skilled and motivated team well of experience in business partnering, training and education, and is dedicated to providing global support.

## OUR PHILOSOPHY

Love, Vision, Research, Solution, Plan, Discipline

We are tied to our job with love

We believe in that; "The only way to do great work and achieve good results is to love what you do" By doing this, you can improve yourself and accomplish.

in order to advance, we take in consideration customer's own perspective

We are trying to evaluate ourselves by looking from the perspective of our customers. By doing this we can understand our mistakes and make it right also we can upgrade our positive and good sides. When we work on our customer requests, we consider their positive and negative assessments about us and we describe that process as a "Company development".

We generate solutions

Process of production is more difficult than assumed. We face different kinds of problems while working on customer requests. We focus on how to solve questions, that's why we can generate different solutions to production and post purchase services.

We are working systematically and disciplined

Our company believes that idea; if you want to be successful in the production or sale area, you need to work disciplined, hang tough, make and stick to the plan, no matter what your circumstances are..

Each order which we receive, we plan every process and we pay strict attention to workers to stick to that plan till the end.

We are looking forward to see and meet with you.

## QUALITY

Quality is not a goal to be achieved, but a process that needs to be developed and maintained continuously. For this purpose; With an awareness of responsibility towards our patients and dentists; maintain and constantly improve the quality level of the services it offers in order to best serve the patient from the beginning until the end of the treatment.

To provide safe, effective and quality implants to our patients; to serve with products with approved quality standards according to CE and ISO standards.

Aiming at patient and doctors' satisfaction; To ensure and increase the satisfaction of our patients and Dentists' with our product quality and technical support in order to provide our patients with the most clinically effective treatments. to extend even more our patients' numbers with a good reputation in our patient's mind. To improve the internal communication among our team of doctors, and the complete administration in the practice in order to improve the service we offer and to increase efficiency.

To increase our productivity by working in mutual cooperation and trust with our companies and universities, clinics and dentists with whom we have business relations,

Continuously improve all processes that affect the success of our company and the quality of our products,

To increase the individual contributions and skills of our employees through continuous training,

To ensure the participation of all our employees in our continuous development with the conscious participation of our employees with high motivation and determination to succeed,

To be a leading company in the sectors it works with its quality and service understanding and to maintain this,

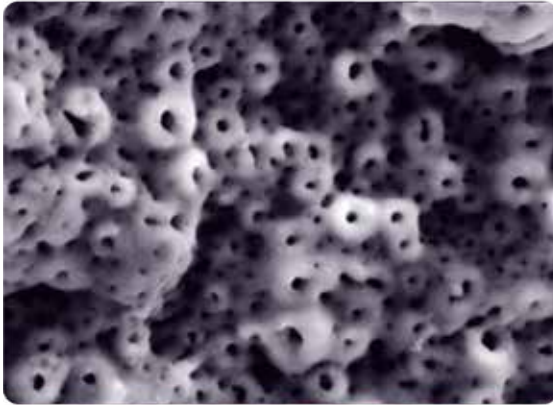
Continuously improve the Quality Management System, to ensure the continuation of the standard requirements, to fully comply with the official and legal requirements

## STERILITY

All production of **Naxis Implants** is thoroughly sterilized. Double sterile packing ensures sterility maintenance. Due to a high technical level of production and the strictest control of sterility, **Naxis Implants** meets the requirements of the highest quality standards, confirmed by appropriate certificates.



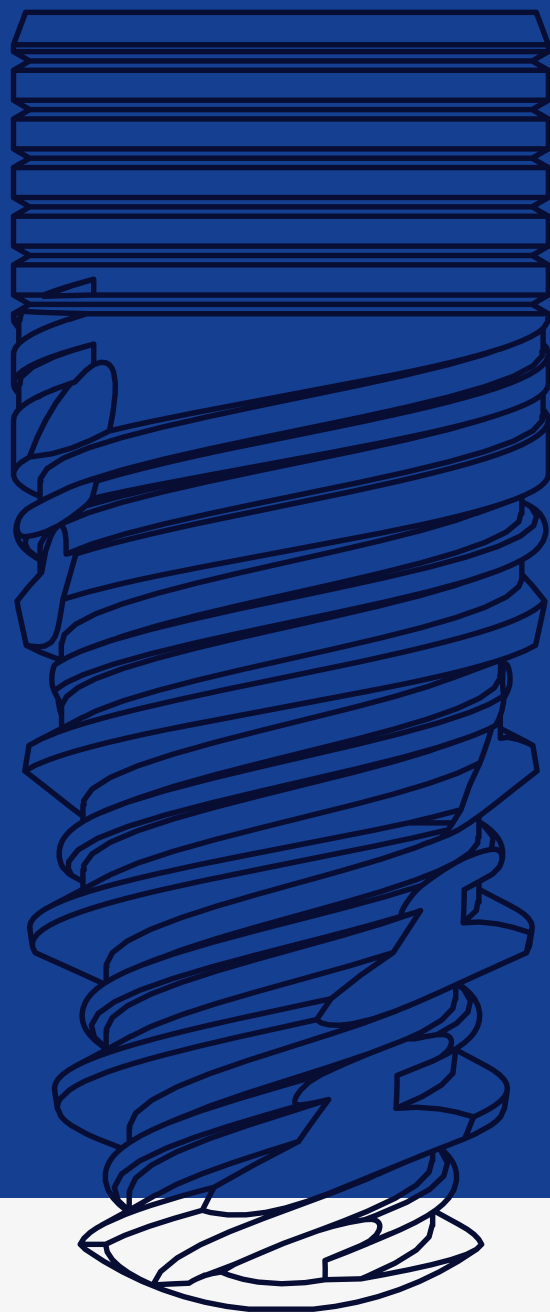
## The Micro Porous Surface (MPS)



The Micro Porous Surface (MPS) represents the latest generation of dental implant surface treatment technology. This surface is active and hydrophilic; it has distinct multi-layered microporous structure. The thickness of oxide layer of the implant surface reaches 10-12 microns. The entire thickness of the oxide layer is imbued with micropores that combine with each other and create a multi-layered surface. This way, the bone tissue grows deeper both in and between micro pores. Thereby, implant surface area is significantly increased and, thus, the contact between bone tissue and implant surface is strengthened. Titanium oxide film is enriched with calcium hydroxyapatite, and the implant surface is contaminant-free. It has prominent hydrophilic characteristics (absorption).

Researches show that The Micro Porous Surface (MPS) stimulates active bone growth over the implant surface that results in mechanical stability. This surface property allows performing orthopedic rehabilitation at an earlier stage and significantly reduces the risk when the implant is installed under the one-stage procedure.

# NX30



**naxis**<sup>®</sup>  
implants



# Implant

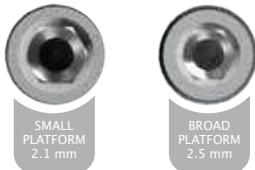
*with conical connection*

## **NX30 Implant** With Conical Connection



# NX30 IMPLANTS

Two types of conical platforms with hexagon



**PLATFORM SWITCHING**  
Switching of the platform  
Narrow connection of the implant  
prevents compression in cortical layer

Set includes  
Closure Cap



## MICRO THREAD

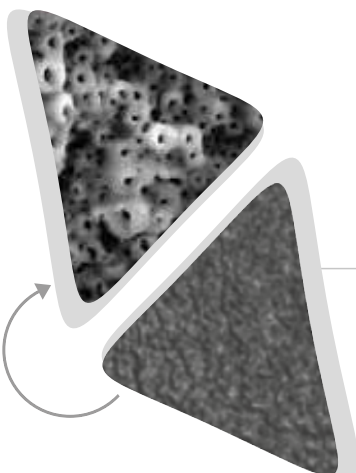
Micro threads for better contact with bone and helps faster regeneration

## INTERMEDIATE THREAD

Bone thread on the corticospongoid level

## THE MICRO POROUS SURFACE (MPS)

Unique active and hydrophilic of surface a new generation



## IMPLANT BODY

Marked tapered shape of the implant

The shape of an implant completely compatible with the drill

High initial stability



## ACTIVE THREAD

Multiple levels of height on threads which allows enlarging the surface of the implant

Allows achieving reliable initial stability in soft bone

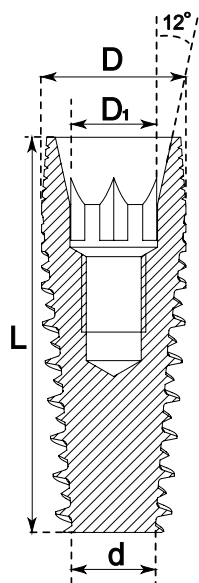
## ANTIROTATIONAL SULCUS

Prevents release of the implant

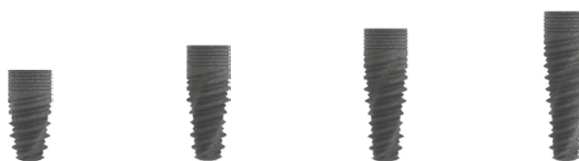
## APICAL PART

Curving in apical part prevents the damage of Schneider's membrane

NX30 implant has a platform with an inner cone and a hexagon for positioning. This type of platform allows creating a conical connection with suprastructures. This connection is more stable and airtight.



Code REF	NX30325080	NX30325100	NX30325115	NX30325130
D,mm	3.25	3.25	3.25	3.25
D1,mm	2.1	2.1	2.1	2.1
d,mm	1.5	1.5	1.5	1.5
L,mm	8	10	11.5	13



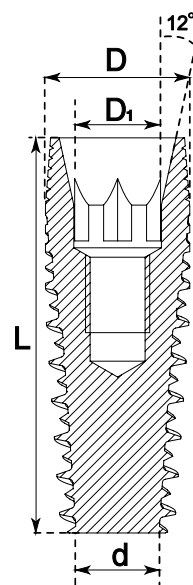
Code REF	NX30375080	NX30375100	NX30375115	NX30375130
D,mm	3.75	3.75	3.75	3.75
D1,mm	2.1	2.1	2.1	2.1
d,mm	2.0	2.0	2.0	2.0
L,mm	8	10	11.5	13



Code REF	NX30420080	NX30420100	NX30420115	NX30420130
D,mm	4.2	4.2	4.2	4.2
D1,mm	2.5	2.5	2.5	2.5
d,mm	2.5	2.5	2.5	2.5
L,mm	8	10	11.5	13



Code REF	NX30500060	NX30500080	NX30500100	NX30500115
D,mm	5.0	5.0	5.0	5.0
D1,mm	2.5	2.5	2.5	2.5
d,mm	3.0	3.0	3.0	3.0
L,mm	6	8	10	11.5





# PROSTHESIS PARTS

## *Abutment*



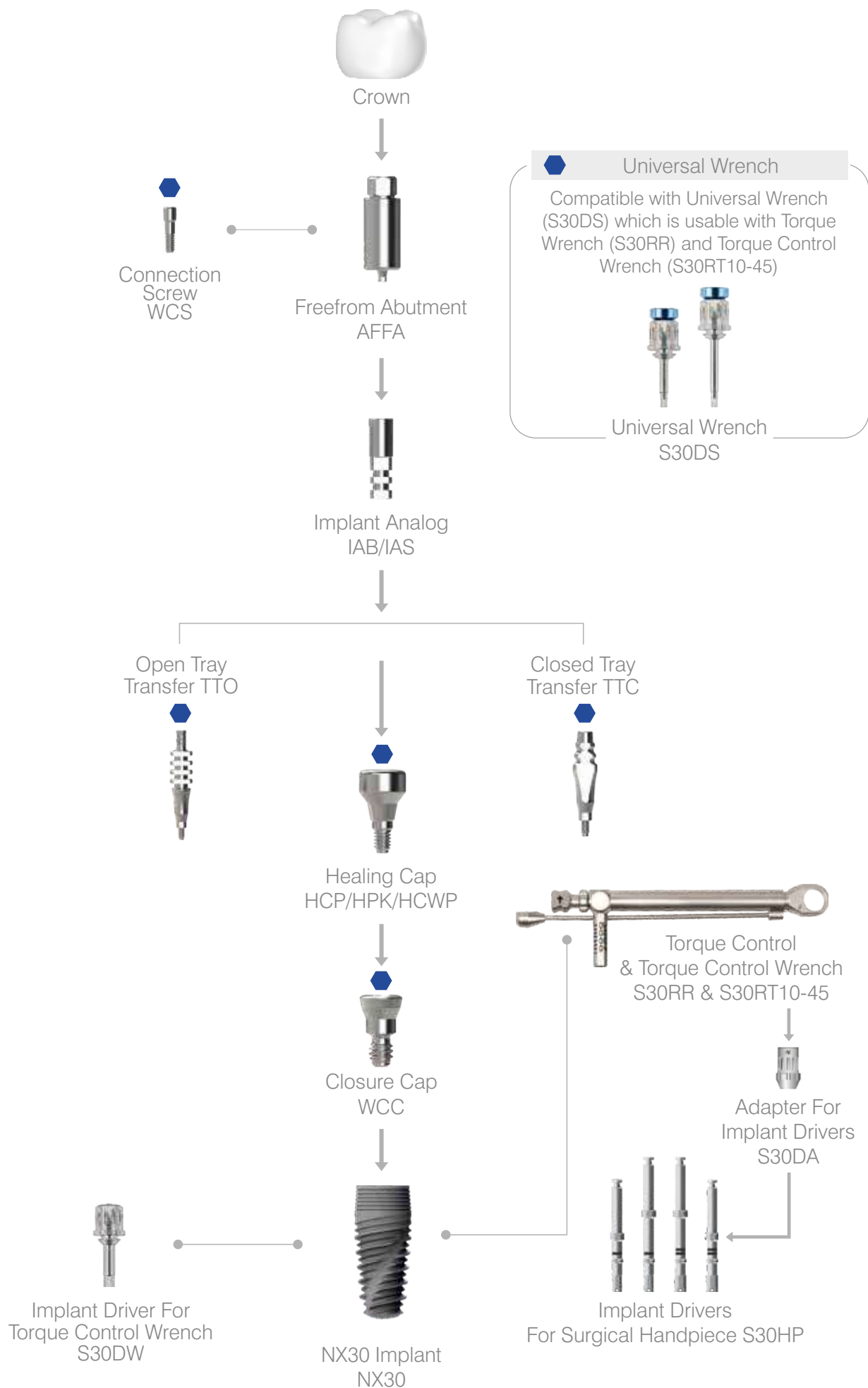
**naxis**<sup>®</sup>  
implants



# Freeform

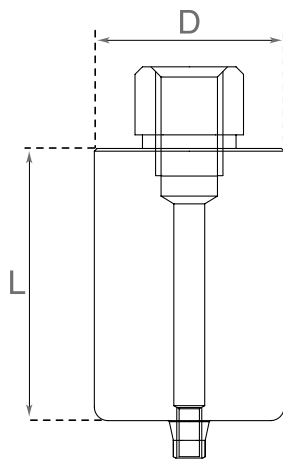
*Abutment*

Freeform  
*Abutment*



# FREEFORM ABUTMENT

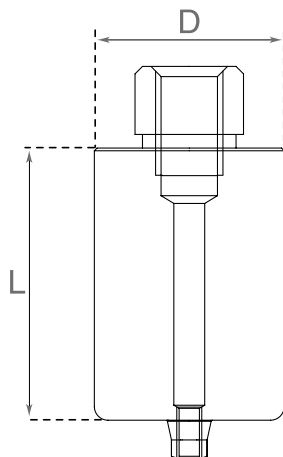
Recommended tightening torque: 20Ncm



## SMALL CONICAL PLATFORM 2.1 mm



Code	AFFA30	Includes
L,mm	20	 Screw for the abutment
D,mm	10	



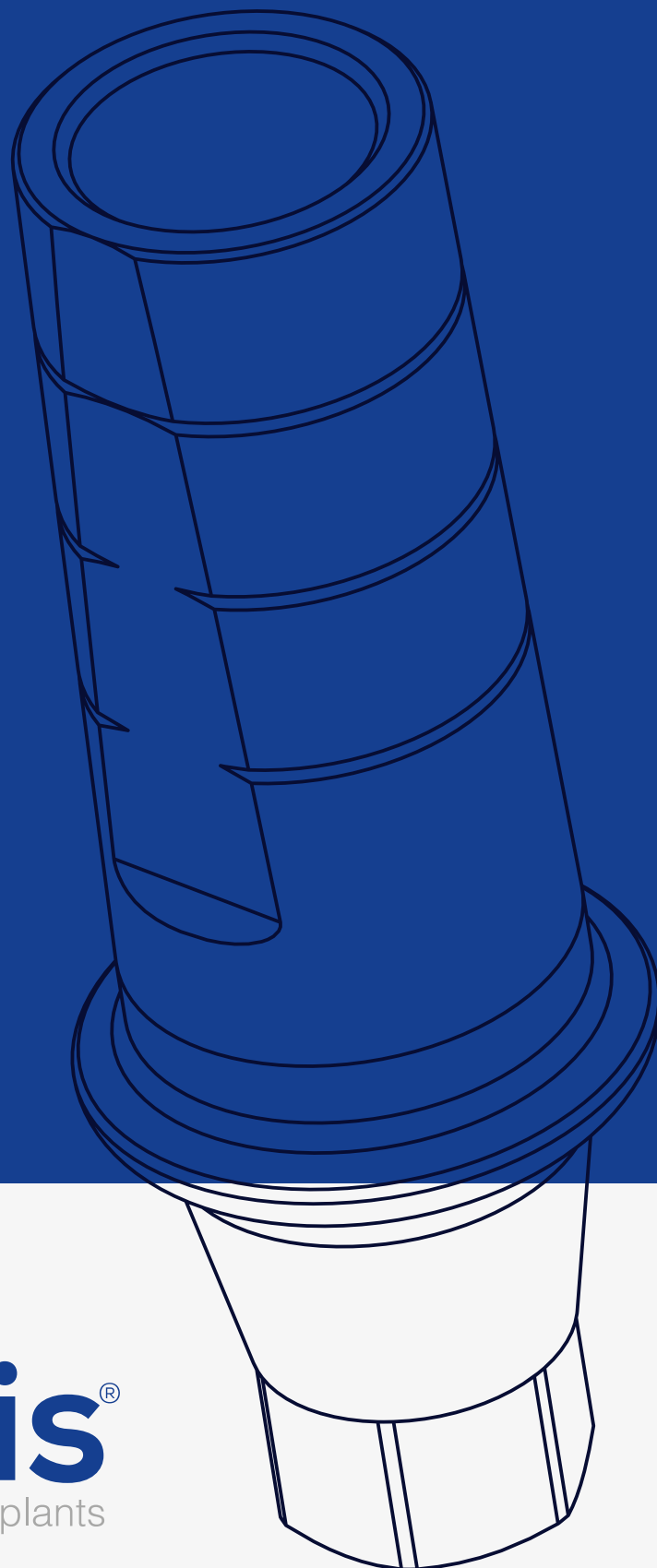
## BROAD CONICAL PLATFORM 2.5 mm



Code	AFFA42	Includes
L,mm	20	 Screw for the abutment
D,mm	10	

# PROSTHESIS PARTS

## *Abutment*



**naxis**<sup>®</sup>  
implants

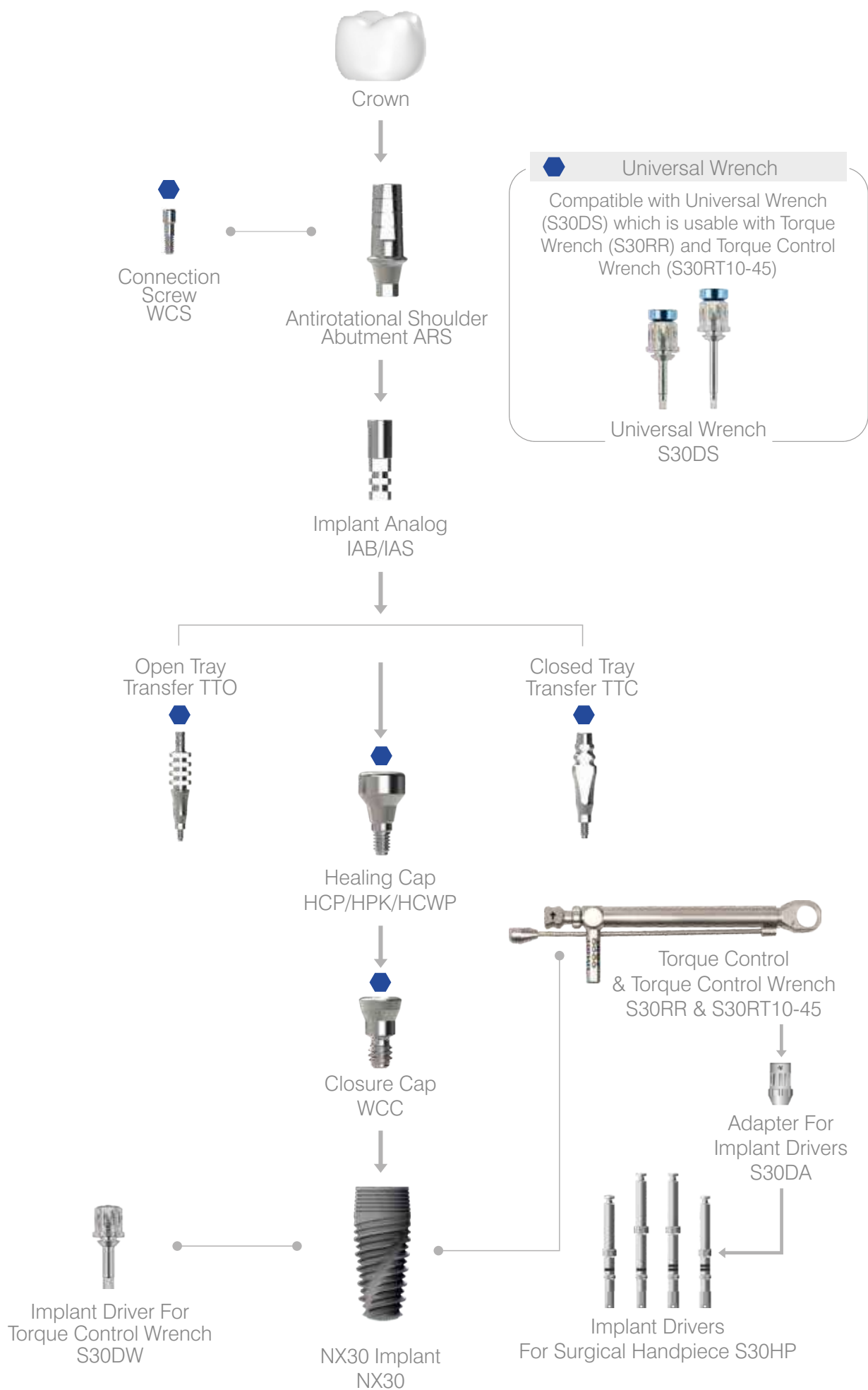




# Antirrotational

*Shoulder Abutment*

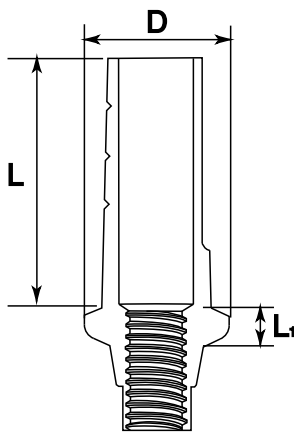
Antirrotational  
*Shoulder Abutment*




# ANTIROTATIONAL SHOULDER ABUTMENT

Recommended tightening torque: 20Ncm

## SMALL CONICAL PLATFORM 2.1 mm




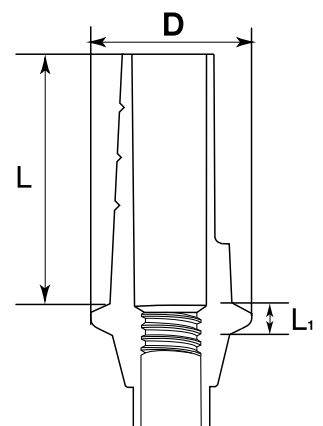
Code	ARS3010	ARS3020	ARS3030	Includes
L,mm	7	7	7	 Screw for the abutment
L1,mm	1	2	3	
D,mm	4.2	4.2	4.2	

Antirotational shoulder abutment straight conical.  
Available in three shoulder sizes: 1,2,3 mm.

## BROAD CONICAL PLATFORM 2.5 mm



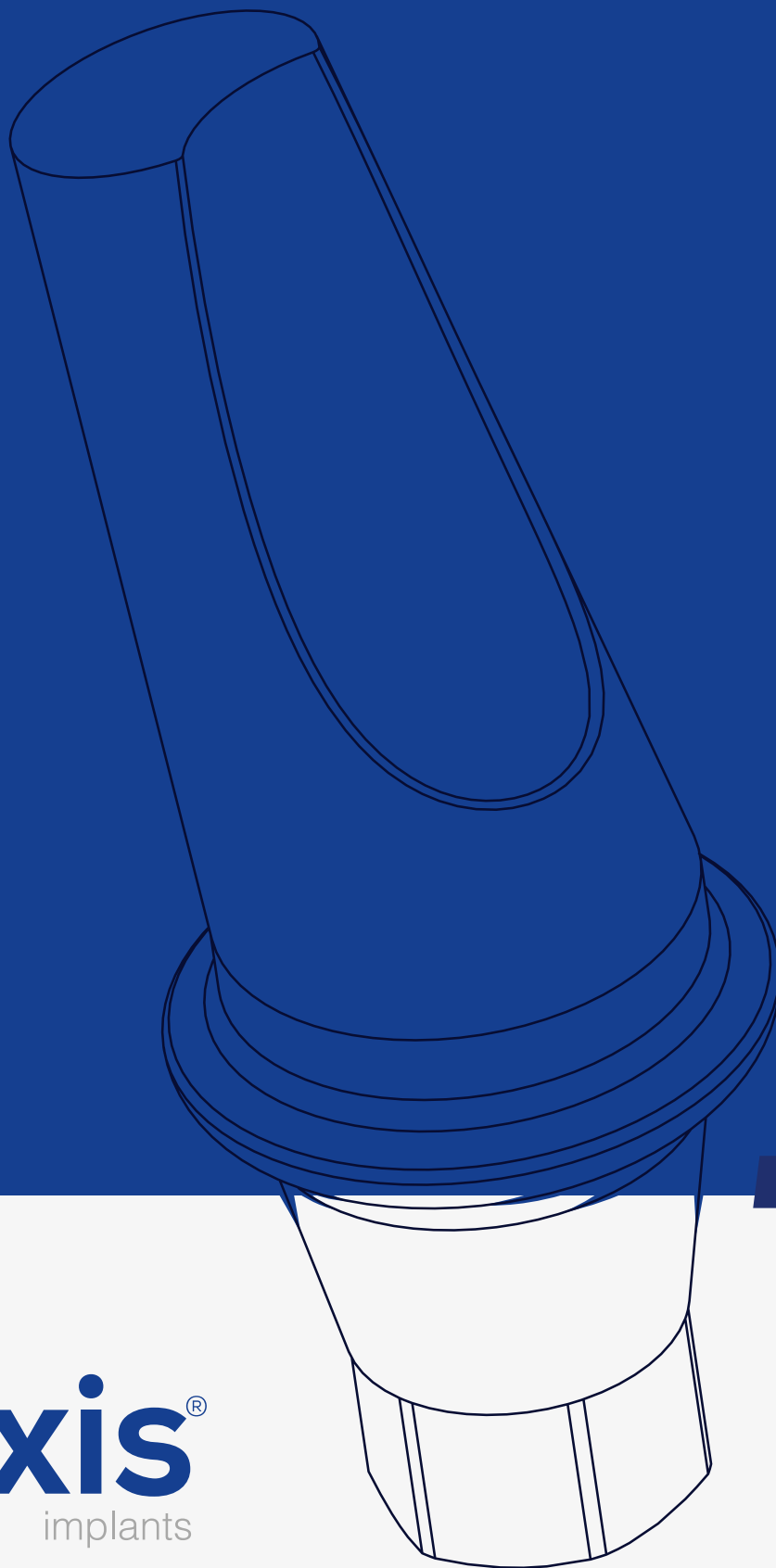
Code	ARS4210	ARS4220	ARS4230	Includes
L,mm	7	7	7	 Screw for the abutment
L1,mm	1	2	3	
D,mm	5.1	5.1	5.1	



Antirotational shoulder abutment straight conical.  
Available in three shoulder sizes: 1,2,3 mm.

# PROSTHESIS PARTS

## *Abutment*



**naxis**<sup>®</sup>  
implants



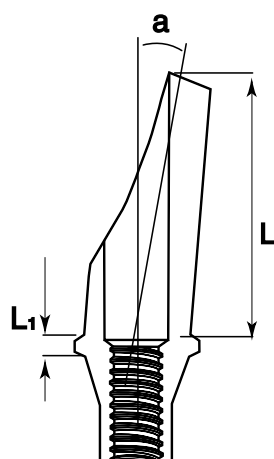
**Anatomical Angular**  
*Abutment Shoulder 15° & 25°*


# ANATOMICAL ANGULAR SHOULDER ABUTMENT 15°

Recommended tightening torque: 15Ncm

SMALL CONICAL PLATFORM 2.1 mm

15°



Code	AAN30151	AAN30152	AAN30153	Includes
L,mm	7	7	7	 Screw for the abutment
L1,mm	1	2	3	
a°	15	15	15	

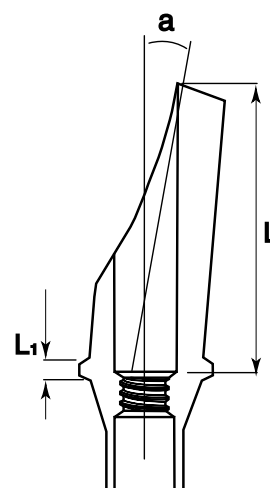
Angular anatomical titanium conical abutment 15° with shoulder 1,2,3 mm. It is used for aesthetic tasks solving in vestibular area, and it replicates the shape of gingival line.

BROAD CONICAL PLATFORM 2.5 mm

15°



Code	AAN42151	AAN42152	AAN42153	Includes
L,mm	7	7	7	 Screw for the abutment
L1,mm	1	2	3	
a°	15	15	15	



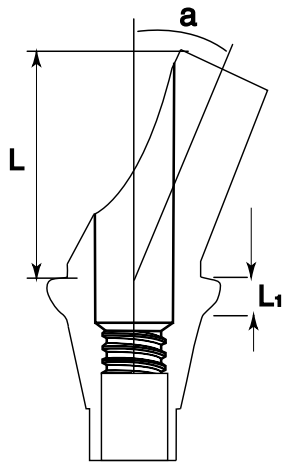
Angular anatomical titanium conical abutment 15° with shoulder 1,2,3 mm. It is used for aesthetic tasks solving in vestibular area, and it replicates the shape of gingival line.


# ANATOMICAL ANGULAR SHOULDER ABUTMENT 25°

Recommended tightening torque: 15Ncm

## SMALL CONICAL PLATFORM 2.1 mm

25°




Code	AAS30252	Includes
L,mm	7	 Screw for the abutment
L1,mm	2	
a°	25	

## BROAD CONICAL PLATFORM 2.5 mm

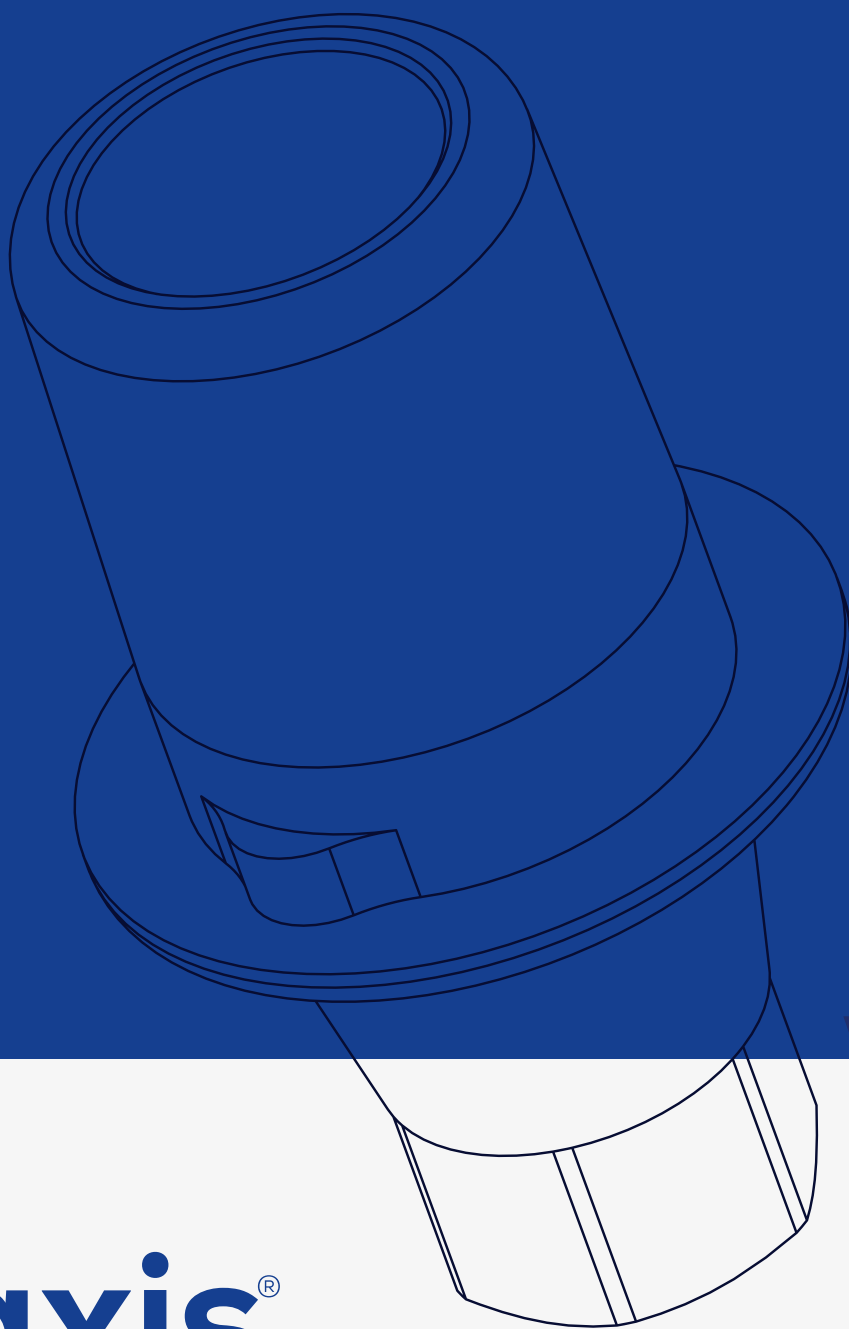
25°



Code	AAS42252	Includes
L,mm	9	 Screw for the abutment
L1,mm	2	
a°	25	

# PROSTHESIS PARTS

## *Abutment*



**naxis**<sup>®</sup>  
implants



*Titanium  
Platform For*

**CAD/CAM**



*Titanium Platform For*  
**CAD/CAM**



Scan for Naxis Implants  
CAD/CAM library  
<http://www.naxisimplant.com/lab/>



Crown



Connection  
Screw  
WCS



Titanium Platform  
for CAD/CAM  
ACADM



Healing Cap  
HCP/HPK/HCWP



Closure Cap  
WCC



Implant Driver For  
Torque Control Wrench  
S30DW



NX30 Implant  
NX30

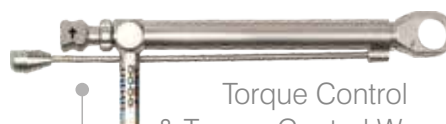


### Universal Wrench

Compatible with Universal Wrench  
(S30DS) which is usable with Torque  
Wrench (S30RR) and Torque Control  
Wrench (S30RT10-45)



Universal Wrench  
S30DS



Torque Control  
& Torque Control Wrench  
S30RR & S30RT10-45



Adapter For  
Implant Drivers  
S30DA

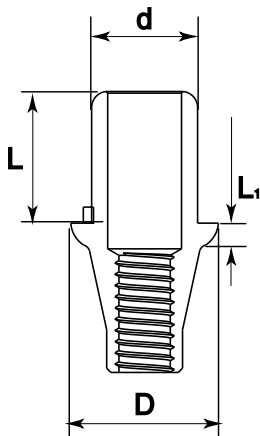



Implant Drivers  
For Surgical Handpiece S30HP

# TITANIUM PLATFORM FOR CAD/CAM

Recommended tightening torque: 20Ncm


## SMALL CONICAL PLATFORM 2.1 mm



Code	ACADM3005	ACADM3010	ACADM3020	ACADM3030	Includes
L,mm	4.1	4.1	4.1	4.1	 Screw for the abutment
L1,mm	0.5	1	2.	3	
d,mm	3.3	3.3	3.3	3.3	
D,mm	4.6	4.6	4.6	4.6	

## BROAD CONICAL PLATFORM 2.5 mm



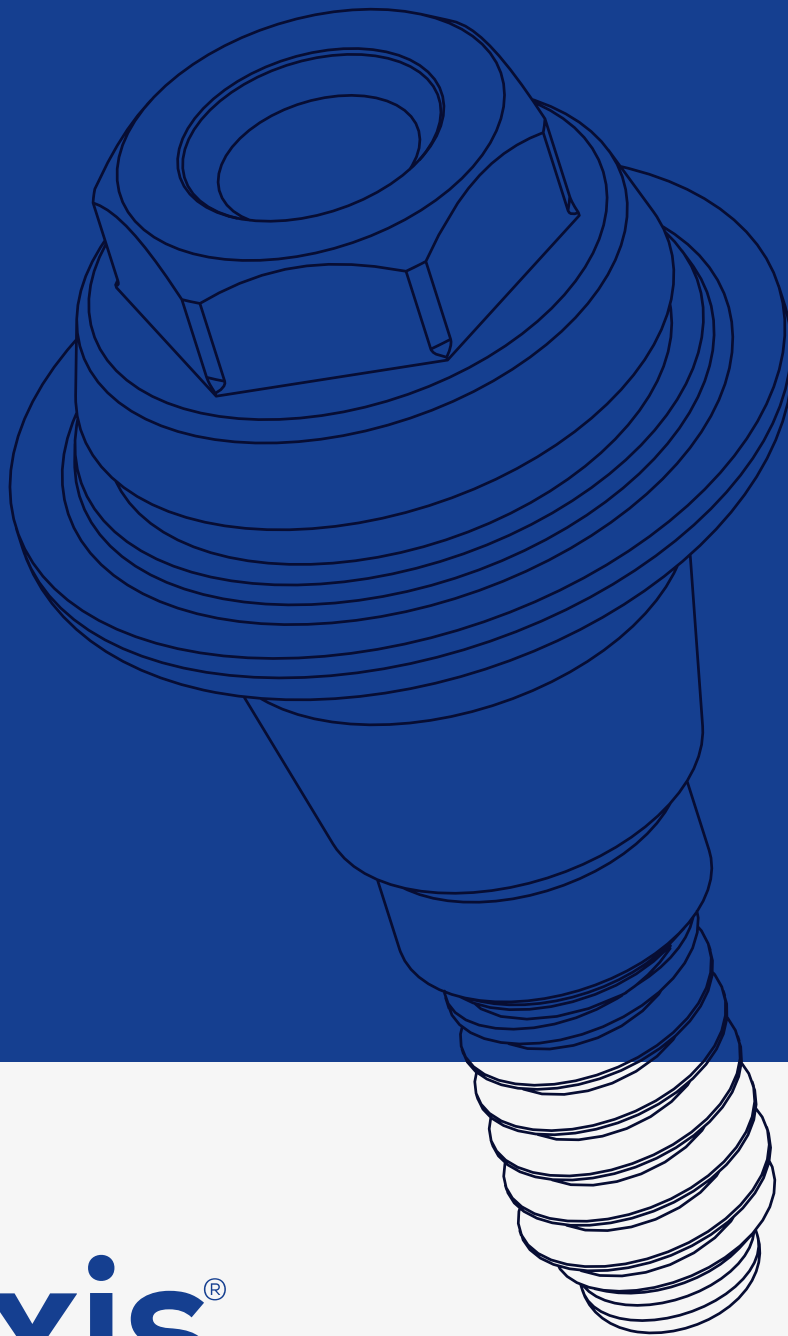
Code	ACADM4205	ACADM4210	ACADM4220	ACADM4230	Includes
L,mm	4.1	4.1	4.1	4.1	 Screw for the abutment
L1,mm	0.5	1	2.	3	
d,mm	3.3	3.3	3.3	3.3	
D,mm	5.1	5.1	5.1	5.1	

Titanium Platform for CAD/CAM for producing individual structures using digital technologies.

Unique occasion to choose a platform of different height depending on the type of mucosa.

# PROSTHESIS PARTS

*Multi-Unit*



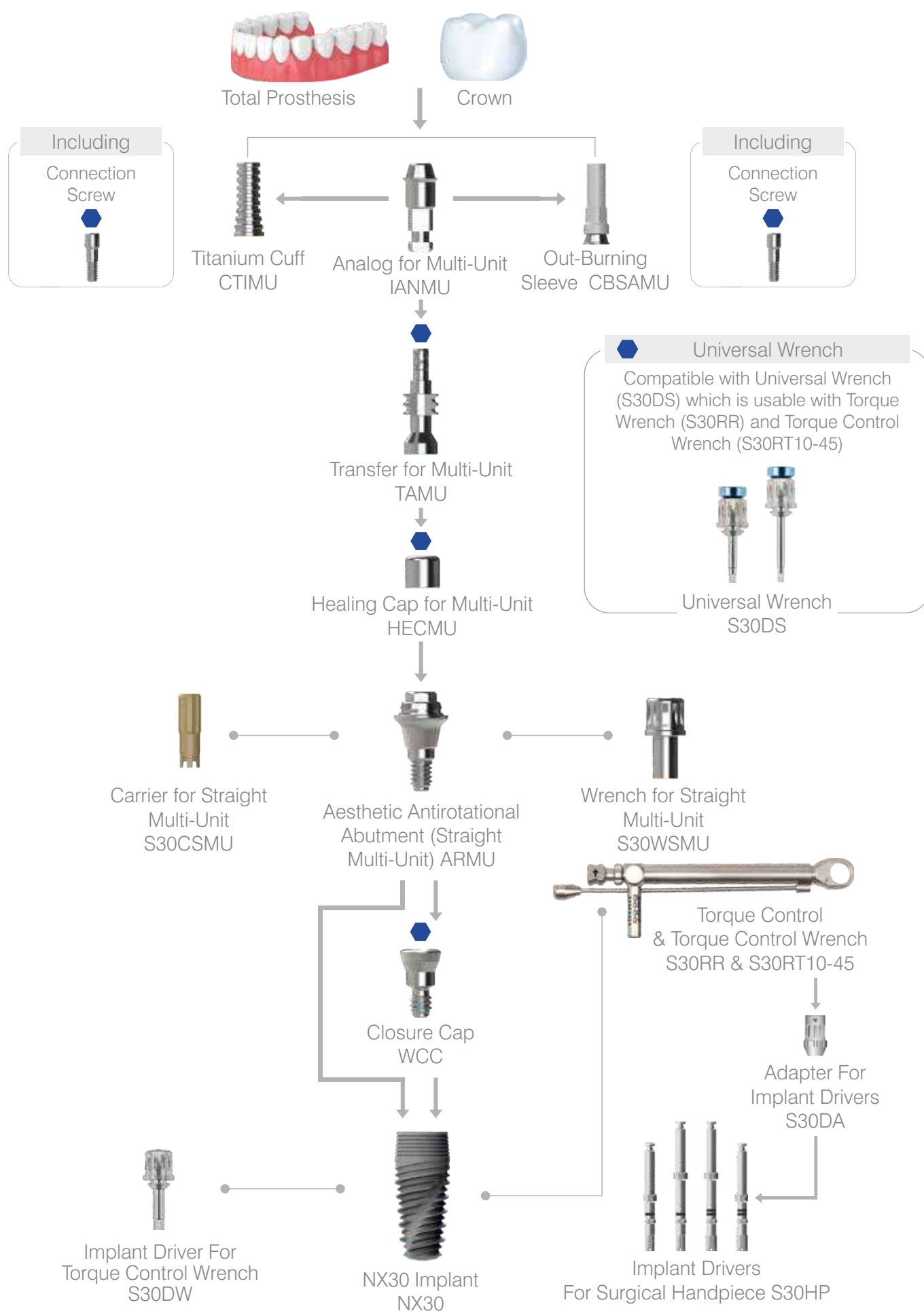
**naxis**<sup>®</sup>  
implants

*Aesthetic  
Antirotational  
Abutment*

# **Straight Multi-Unit**



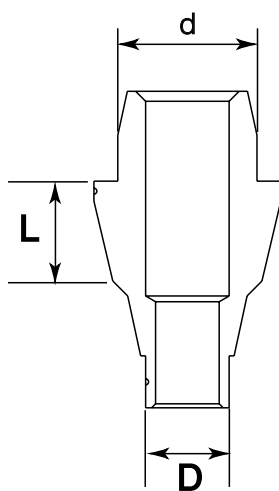
*Aesthetic Antirotational Abutment*  
**Straight Multi-Unit**



# AESTHETIC ANTIROTATIONAL ABUTMENT (STRAIGHT MULTI-UNIT)

Recommended tightening torque: 20Ncm

## SMALL CONICAL PLATFORM 2.1 mm



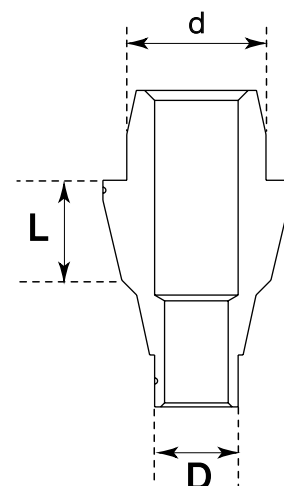
Code	ARMU301	ARMU302	ARMU303
L,mm	1	2	3
D,mm	2.35	2.35	2.35
d,mm	4.0	4.0	4.0

Aesthetic antirotational abutment (straight multi-unit) with a plastic cuff is used in order to restore a single structure or a bridge with a screw retention.  
Screw the Cuff in with a maximum force of 15 newton.

## BROAD CONICAL PLATFORM 2.5 mm



Code	ARMU421	ARMU422	ARMU423
L,mm	1	2	3
D,mm	2.8	2.8	2.8
d,mm	4.0	4.0	4.0



# PROSTHESIS PARTS


*Multi-Unit*



**naxis**<sup>®</sup>  
implants



*One Piece Angular*

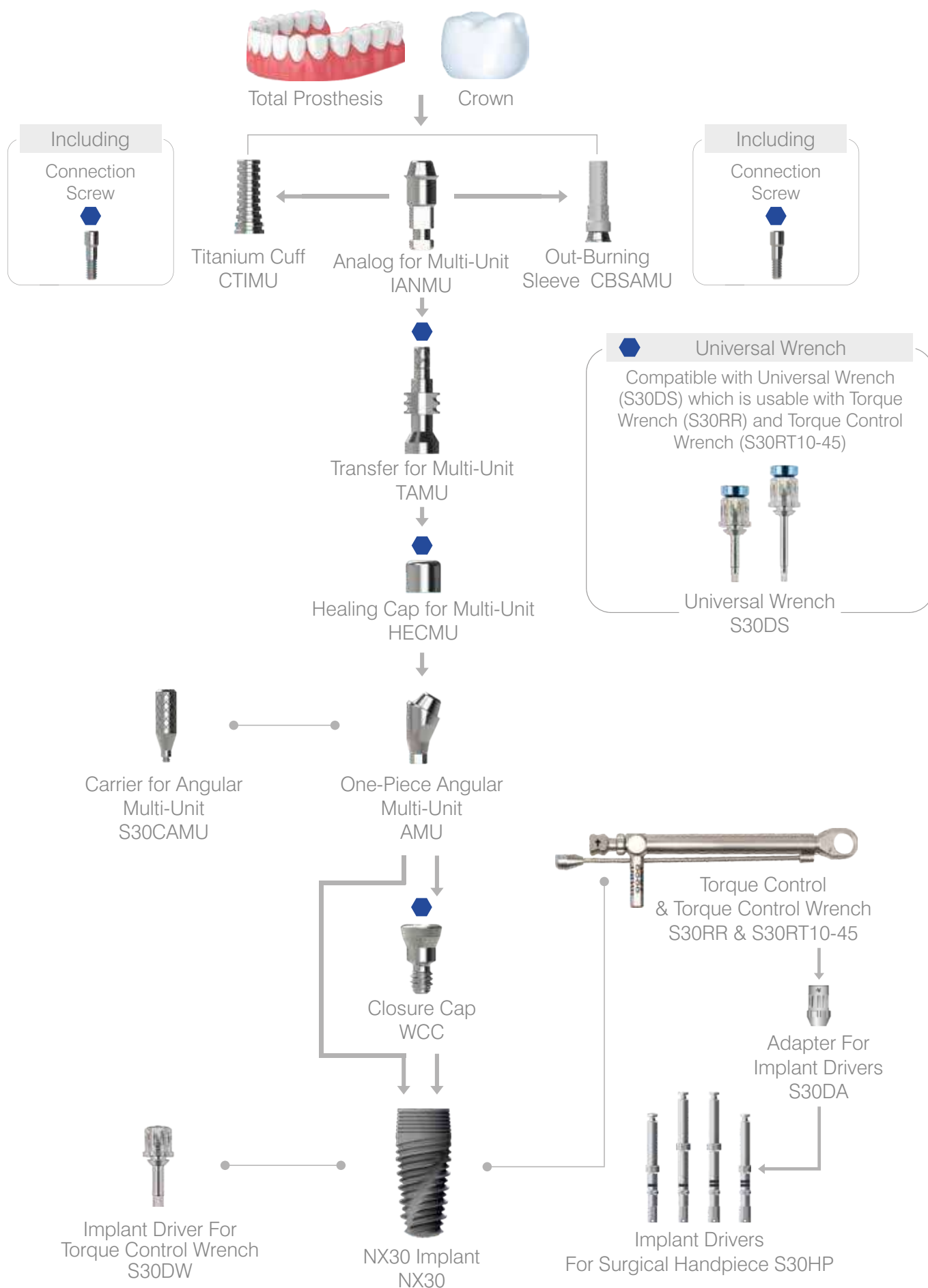


# Multi-Unit

**17°&30°**

*One Piece Angular*

## Multi-Unit 17°&30°

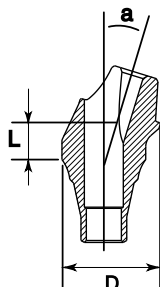


# ONE-PIECE ANGULAR MULTI-UNIT 17°&30°

Recommended tightening torque: 15Ncm

## SMALL CONICAL PLATFORM 2.1 mm

17°



Code	AMU30171	AMU30172	AMU30173
L,mm	1	2	3
D,mm	4.7	4.7	4.7
a°	17	17	17

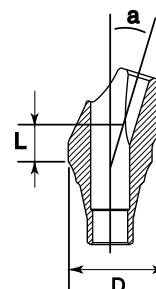
17° with shoulder 1,2,3 mm. It is used for aesthetic tasks solving in vestibular area, and it replicates the shape of gingival line.

## BROAD CONICAL PLATFORM 2.5 mm

17°

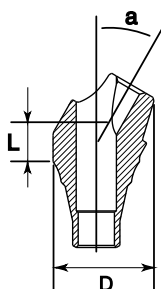


Code	AMU42171	AMU42172	AMU42173
L,mm	1	2	3
D,mm	4.7	4.7	4.7
a°	17	17	17



## SMALL CONICAL PLATFORM 2.1 mm

30°



Code	AMU30301	AMU30302	AMU30303
L,mm	1	2	3
D,mm	4.7	4.7	4.7
a°	30	30	30

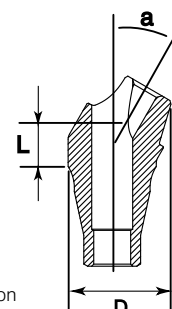
Multi-unit system is used for a prosthesis with screw retention. One-piece angular multi-unit enables rehabilitation on non-parallel implants by correcting the angle. Angular multi-unit is available in options 17° and 30°.

## BROAD CONICAL PLATFORM 2.5 mm

30°



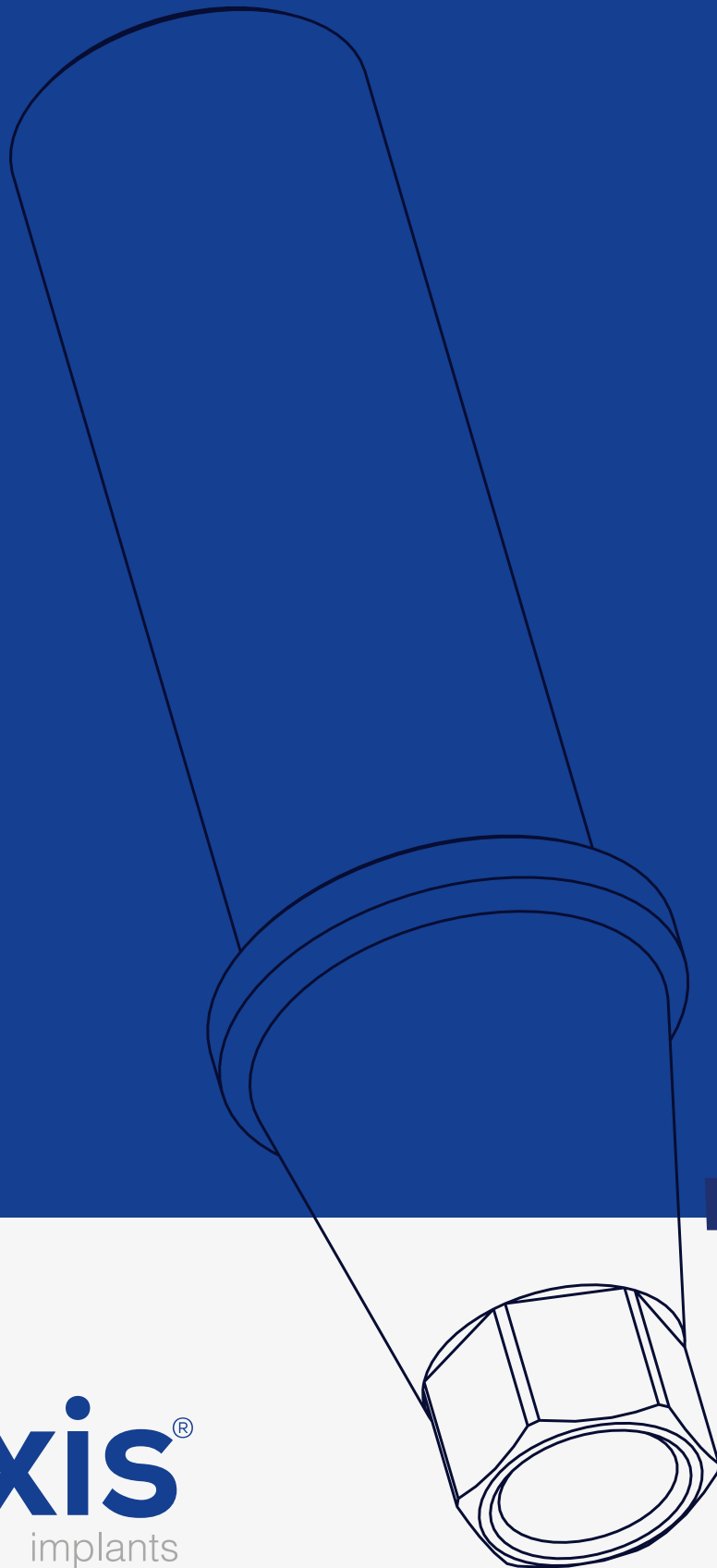
Code	AMU42301	AMU42302	AMU42303
L,mm	1	2	3
D,mm	4.7	4.7	4.7
a°	30	30	30



Multi-unit system is used for a prosthesis with screw retention. One-piece angular multi-unit enables rehabilitation on non-parallel implants by correcting the angle. Angular multi-unit is available in options 17° and 30°.

# PROSTHESIS PARTS

## *Burnout Abutment*



**naxis**<sup>®</sup>  
implants



# Ti-Base

*Plastic Burnout*

Plastic Burnout &  
Titanium Base

*Plastic Burnout Abutment*



Crown



Connection  
Screw  
WCS



Plastic Burnout  
Titanium Base APTB



Plastic Burnout  
APBO



Implant Analog  
IAB/IAS



Universal Wrench

Compatible with Universal Wrench (S30DS) which is usable with Torque Wrench (S30RR) and Torque Control Wrench (S30RT10-45)



Universal Wrench  
S30DS

Open Tray  
Transfer TTO



Closed Tray  
Transfer TTC



Healing Cap  
HCP/HPK/HCWP



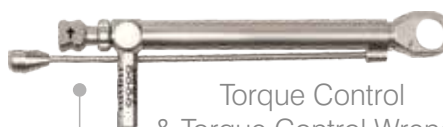
Closure Cap  
WCC



NX30 Implant  
NX30



Implant Driver For  
Torque Control Wrench  
S30DW



Torque Control  
& Torque Control Wrench  
S30RR & S30RT10-45



Adapter For  
Implant Drivers  
S30DA

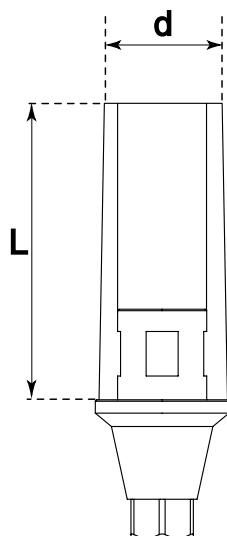


Implant Drivers  
For Surgical Handpiece S30HP

# PLASTIC BURNOUT ABUTMENT ON TITANIUM BASE

Recommended tightening torque: 20Ncm

## SMALL CONICAL PLATFORM 2.1 mm



Code	APT30	Includes
L,mm	9	
d,mm	4,5	



Screw for the  
abutment

## BROAD CONICAL PLATFORM 2.1 mm



Code	APT42	Includes
L,mm	9	
d,mm	4,5	



Screw for the  
abutment

Plastic conical abutment with titanium base is used  
with single implants.

# PLASTIC BURNOUT ABUTMENT

Recommended tightening torque: 20Ncm

## SMALL CONICAL PLATFORM 2.1 mm



Code	APBO30	Includes
L,mm	9	
d,mm	4.2	



Screw for the  
abutment

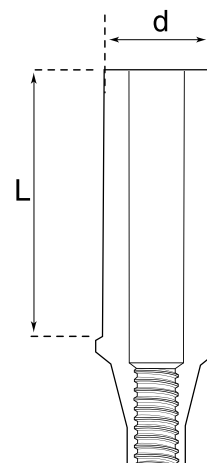
## BROAD CONICAL PLATFORM 2.5 mm



Code	APBO42	Includes
L,mm	9	
d,mm	4.6	



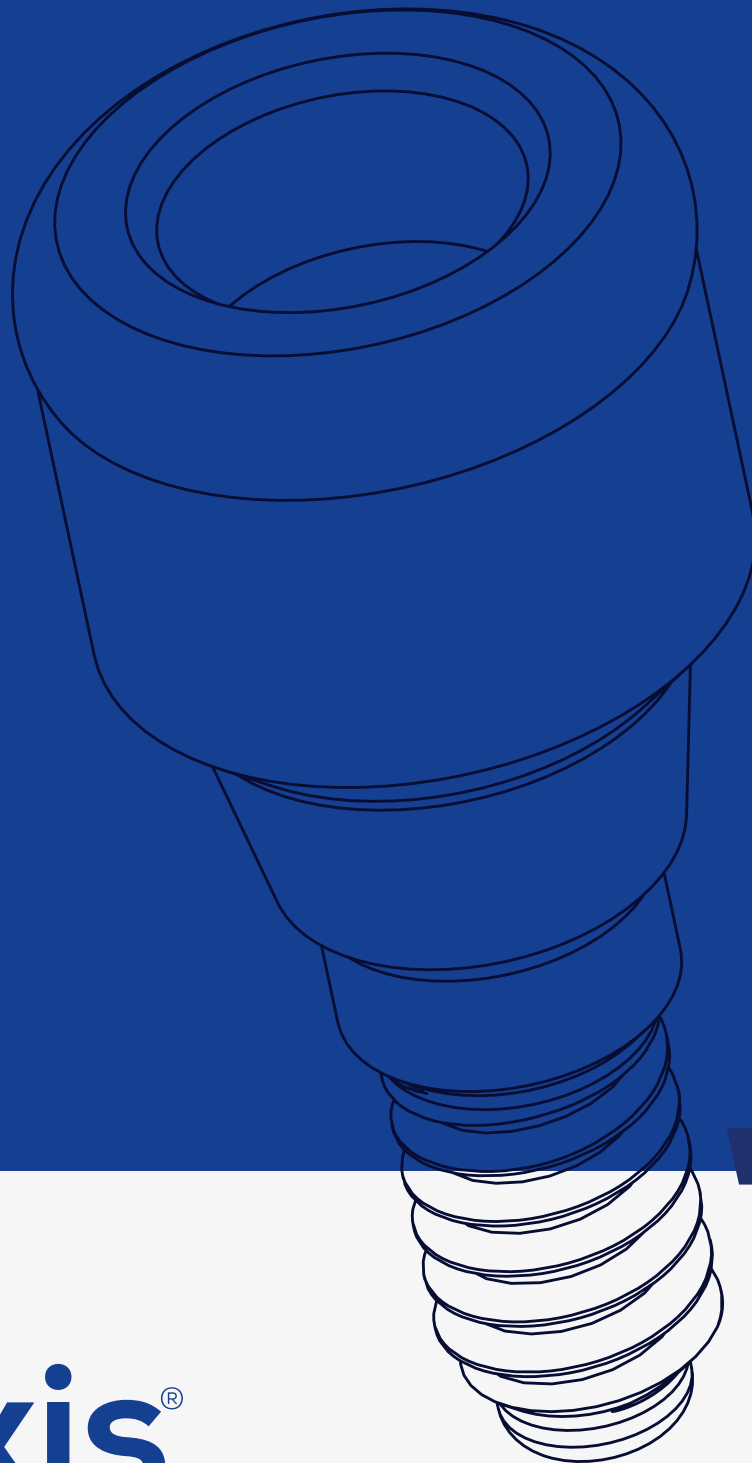
Screw for the  
abutment



Plastic burnout conical abutment is intended for  
individual orthopedic structures

# PROSTHESIS PARTS

*Lockab*

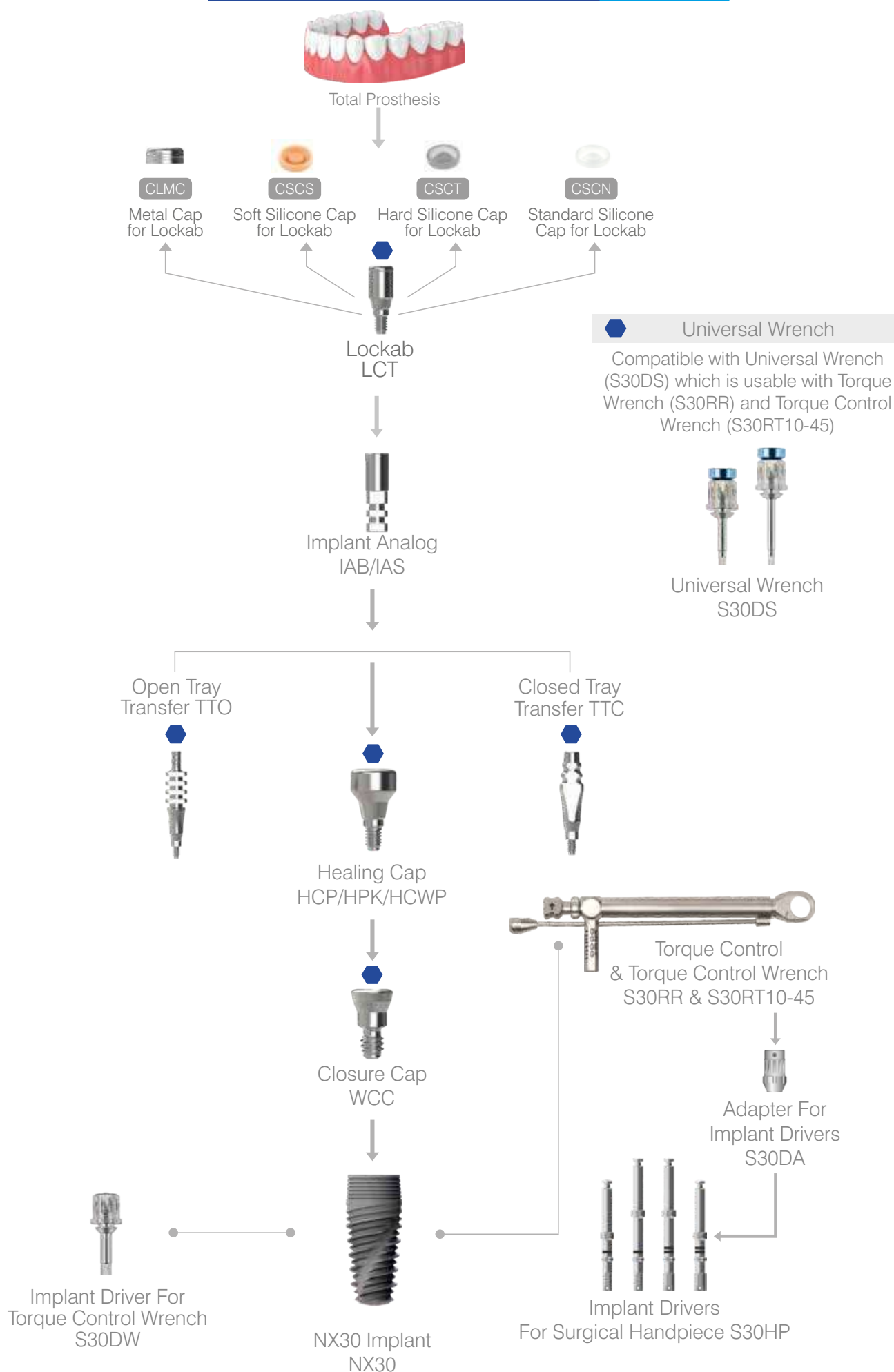


**naxis**<sup>®</sup>  
implants





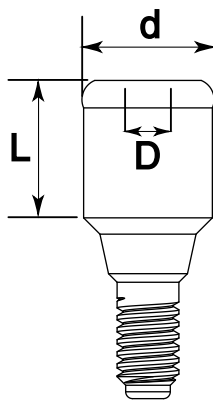
Lockab



# LOCKAB

Recommended tightening torque: 20Ncm

## SMALL CONICAL PLATFORM 2.1 mm

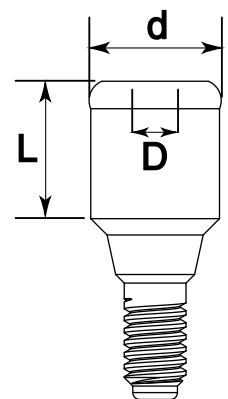


Code	LCT302	LCT303	LCT304	LCT305	LCT306	Includes
L,mm	2	3	4	5	6	
D,mm	1.25	1.25	1.25	1.25	1.25	
d,mm	3.9	3.9	3.9	3.9	3.9	

## BROAD CONICAL PLATFORM 2.5 mm



Code	LCT422	LCT423	LCT424	LCT425	LCT426	Includes
L,mm	2	3	4	5	6	
D,mm	1.25	1.25	1.25	1.25	1.25	
d,mm	3.9	3.9	3.9	3.9	3.9	



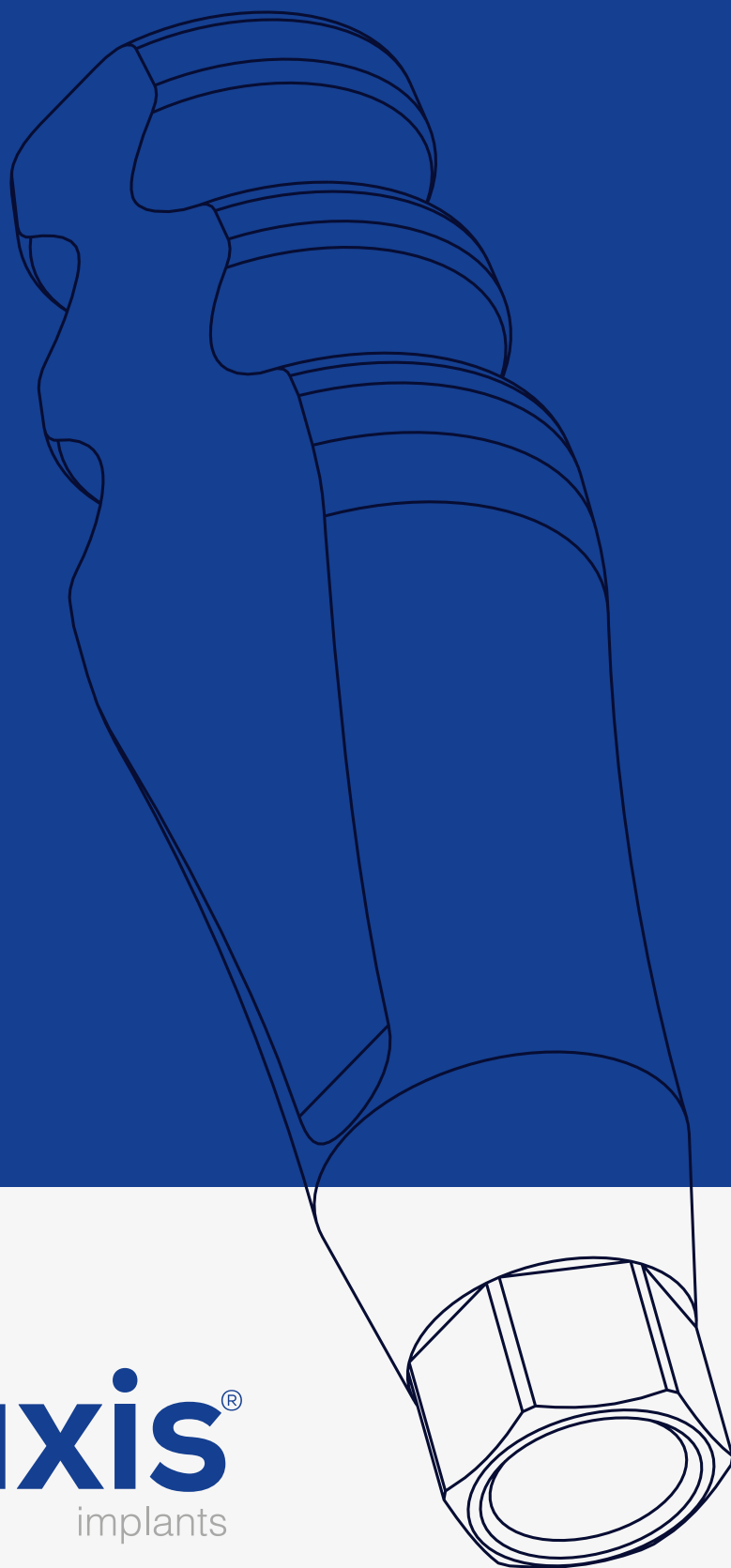
Lockab with a conical connection is used for removable denture fixation.

A cap made of stainless steel can be included, as well as an intermediate silicone cap.

- CLMC Metal Cap for Lockab
- CSCN Standard Silicone Cap for Lockab
- CSCS Soft Silicone Cap for Lockab
- CSCT Hard Silicone Cap for Lockab

# ACCESSORIES

*Transfer & Analog*

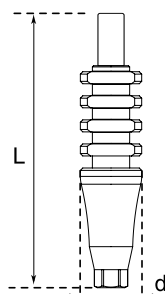


**naxis**<sup>®</sup>  
implants

# Transfer & Analog


Transfer & Analog

## OPEN TRAY TRANSFER



### SMALL CONICAL PLATFORM 2.1 mm

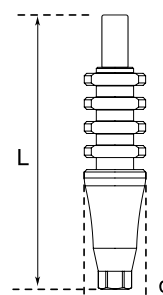


Code	TTO3015	Includes
L,mm	17.75	 Screw for Open Tray Transfer
d,mm	4.0	

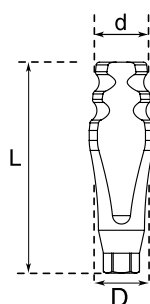
### BROAD CONICAL PLATFORM 2.5 mm



Code	TTO4215	Includes
L,mm	15	 Screw for Open Tray Transfer
d,mm	4.0	



## CLOSED TRAY TRANSFER



### SMALL CONICAL PLATFORM 2.1 mm

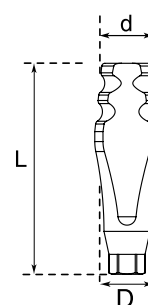


Code	TTC309	Includes
L,mm	13.7	 Screw for Closed Tray Transfer
D,mm	4.0	
d,mm	3.0	

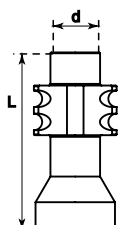
### BROAD CONICAL PLATFORM 2.5 mm



Code	TTC429	Includes
L,mm	13,7	 Screw for Closed Tray Transfer
D,mm	4.0	
d,mm	3.0	



## TRANSFER FOR MULTI-UNIT

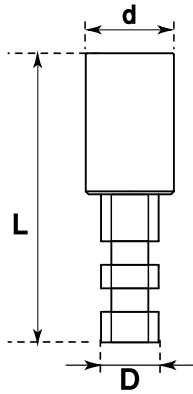


### MULTI-UNIT PLATFORM



Code	TAMU	Includes
L,mm	10	 Screw for Transfer for Multi-Unit
d,mm	4.5	

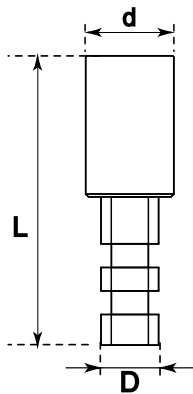
# IMPLANT ANALOG



## SMALL CONICAL PLATFORM 2.1 mm




Code	IAS30	Includes
L,mm	12.3	 Screw for Open Tray Transfer
D,mm	2.5	
d,mm	3.7	

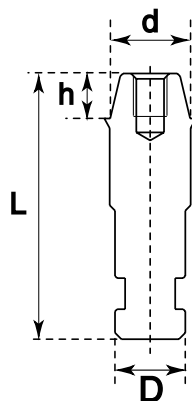


## BROAD CONICAL PLATFORM 2.5 mm



Code	IAB42	Includes
L,mm	13.5	 Screw for Open Tray Transfer
D,mm	2.7	
d,mm	4.0	

# ANALOG OF MULTI-UNIT



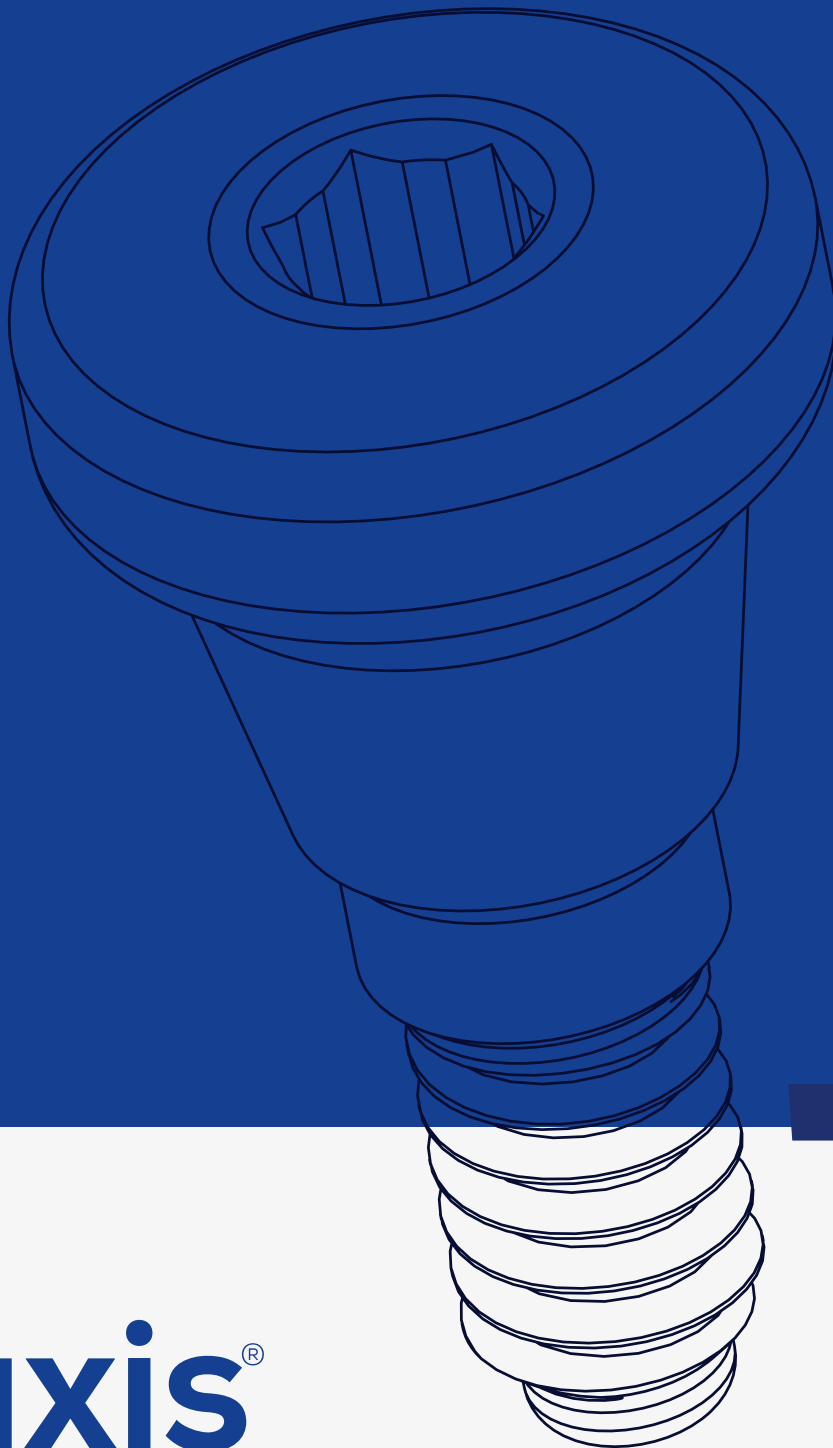
## MULTI-UNIT PLATFORM



Code	IANMU
L,mm	12.4
D,mm	3.3
d,mm	3.75
h,mm	2.0

# ACCESSORIES

## *Healing Cap*



**naxis**<sup>®</sup>  
implants



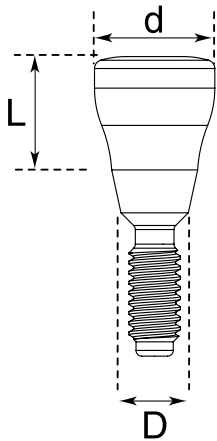
# Healing



*Cap*

Healing Cap

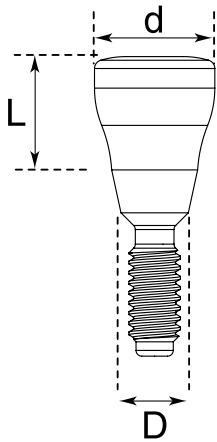
# HEALING CAP



## SMALL CONICAL PLATFORM 2.1 mm



Code	HCP302	HCP303	HCP304	HCP305	HCP307
L,mm	2	3	4	5	7
D,mm	2.35	2.35	2.35	2.35	2.35
d,mm	5.1	5.1	5.1	5.1	5.1

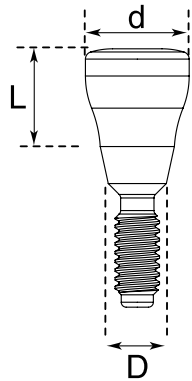


## BROAD CONICAL PLATFORM 2.1 mm



Code	HCP422	HCP423	HCP424	HCP425	HCP427
L,mm	2	3	4	5	7
D,mm	2.8	2.8	2.8	2.8	2.8
d,mm	5.1	5.1	5.1	5.1	5.1

# WIDE HEALING CAP

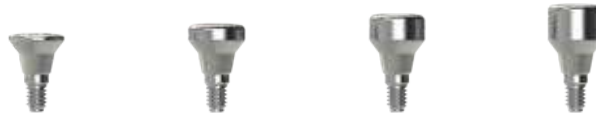


## SMALL CONICAL PLATFORM 2.1 mm

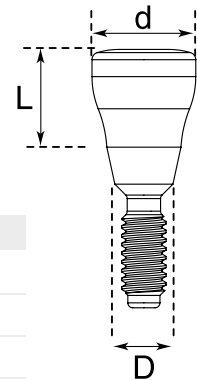


Code	HCWP303	HCWP304	HCWP305
L,mm	3	4	5
D,mm	2.35	2.35	2.35
d,mm	5.0	5.0	5.0

## BROAD CONICAL PLATFORM 2.5 mm

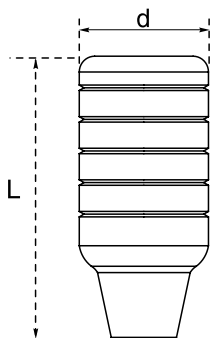


Code	HCWP422	HCWP423	HCWP424	HCWP425
L,mm	2	3	4	5
D,mm	2.8	2.8	2.8	2.8
d,mm	5.5	5.5	5.5	5.5



# HEALING CAP PEEK

## SMALL CONICAL PLATFORM 2.1 mm



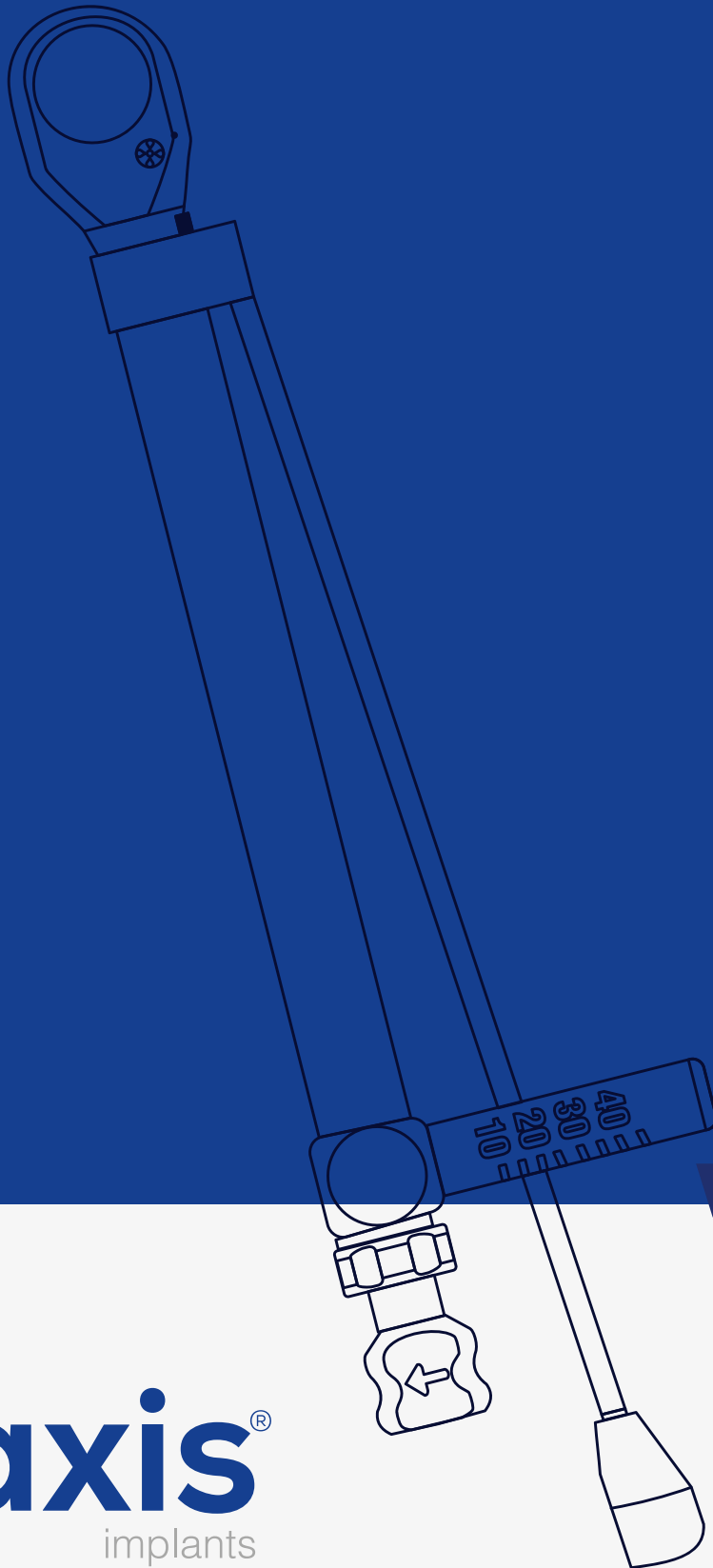
Code	HPK30	Includes
L,mm	8.95	 Screw for the healing cap
d,mm	4.2	

## BROAD CONICAL PLATFORM 2.5 mm



Code	HPK42	Includes
L,mm	8.75	 Screw for the healing cap
d,mm	5.1	

# SURGICAL PART

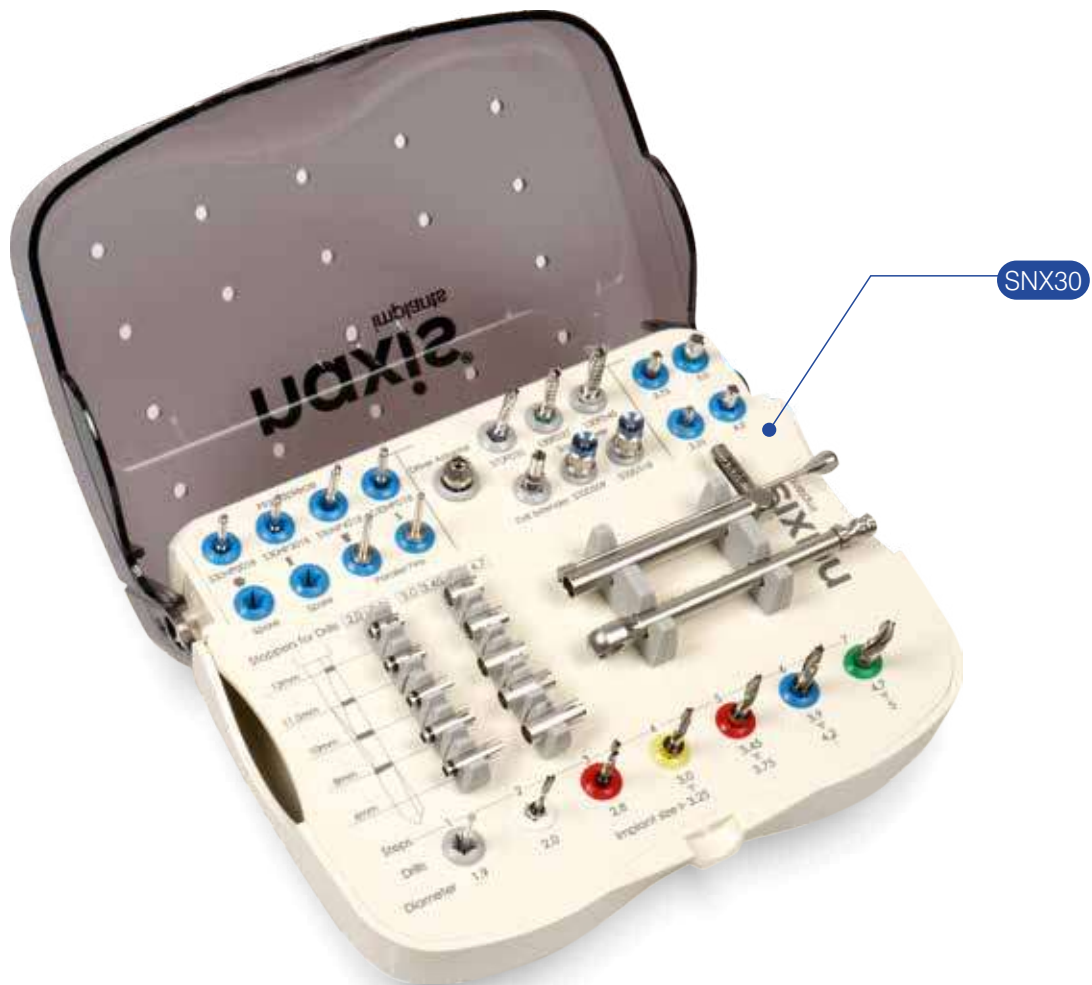


**naxis**<sup>®</sup>  
implants



# Instruments & Kits

Instruments & Kits



## A SET OF INSTRUMENTS

### Heat Resistance Instrument Case

An minimized and improved set by Naxis Implants includes all the necessary instruments for the installation of implants and allows conducting all procedures fast and safely.

The new ergonomic design is made in accordance with a sequence of preparation of bone cavity for the implant.

## DRILLS



## COUNTERSINKS



## STOPS

for Drills 2.0 and 2.8



## TORQUE WRENCHES



## STOPS

for 3.0, 3.45, 3.9, 4.7 drills



## TORQUE CONTROL WRENCHES



## DRILL EXTENDER



## IMPLANT DRIVERS



## ADAPTER FOR IMPLANT DRIVERS



## WRENCH FOR ABUTMENT UNIVERSAL SCREW



## PARALLEL PIN



## IMPLANT DRIVERS

For implants with conical connection

### SMALL CONICAL PLATFORM FOR SURGICAL HANDPIECE



S30HP3009

S30HP3018

### BROAD CONICAL PLATFORM FOR SURGICAL HANDPIECE



S30HP4209

S30HP4218

### SMALL CONICAL PLATFORM FOR TORQUE CONTROL WRENCH



S30DW3009

### BROAD CONICAL PLATFORM FOR TORQUE CONTROL WRENCH



S30DW4209

## ADAPTER FOR IMPLANT DRIVERS

Adapter for implant drivers for surgical handpiece for:

- torque wrench
- torque control wrench
- implant drivers for handpieces



S30DA



## UNIVERSAL WRENCH FOR ABUTMENT SCREW FIXATION

### Size of 9 mm and 18 mm

Short and long manual wrench for screws.  
It can be used for manual screw fixation, as well as for torque wrench or torque control wrench. It can be used with all screws in the system.



S30DS09



S30DS18

## PARALLEL PIN

The parallel pins during the surgery it helps to doctor to understand the depth and angle



S30PP09



S30PP18

## DRILL EXTENDER

Drill extender which helps for elongation of implant driver for surgical hand pieces with angle driver



S30DE

## WRENCHES

Torque Wrench



S30RR

Torque Control Wrench



S30RT10-45

Torque Wrench & Torque Control Wrench



## DRILL

Perfect formation of a bone cavity for installation of conical shape Nx30 conical shape of drill perfectly recreates the shape of conical implant without a thread. Diamond coated allows maintaining the cutting properties of drill for longer time.



## COUNTERSINKS

It is used in order to reduce compression in cortical layer, to preserve trophicity, and to prevent bone resorption



## THE SET OF STOPS FOR DRILLS

The set of stops for drills with 2.0 and 2.8 mm diameters



The set of stops for drills with 3.0, 3.45, 3.9, and 4.7 mm diameters



Drill stops are used in order to form a guaranteed depth of bone cavity for installation of a selected implant. The stop will stand still at the level of a cortical layer and will prevent an excessive drilling.





Naxis Medical GmbH / Germany

**Synergy**  
from the roots.

**naxis**<sup>®</sup>  
implants  
CE 1984 EN ISO 13485

Naxis Medical GmbH  
Werner-von-Siemens-Straße 2 64319  
Pfungstadt Germany  
info@naxisimplant.com  
www.naxisimplant.com